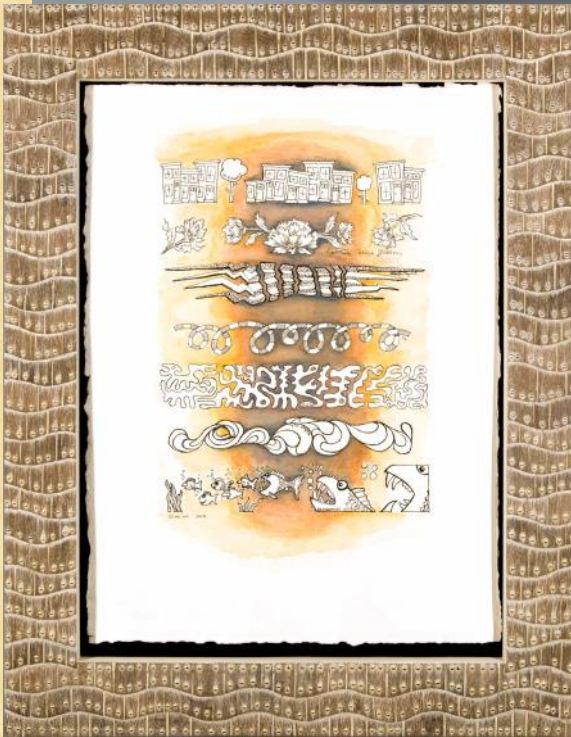


Echo Lake Collaborative



A Twenty Year Retrospective

Echo Lake Collaborative

A Twenty Year Retrospective

Echo Lake Collaborative

A Twenty Year Retrospective

New Hope Arts, New Hope, PA

May 18, 2019-June 16, 2019

Exhibition Organized By

Tom Buchner, Carol Cruickshanks, John Mathews, Matt Overton, Christine Ramirez, Joe Seltzer, Barb Serratore, Mark Sfirri, Ward Stevens, Bil Sticker

Exhibition Supported by

*New Hope Arts, Bucks Woodturners,
Bucks County Community College and
The Echo Lake Steering Committee:*

*Tom Buchner, John Mathews, Matt Overton, Joe Seltzer
Barb Serratore, Mark Sfirri, Ward Stevens, Bil Sticker*

Catalog Design by

Mark Sfirri and Ward Stevens

Photography by

Burns Austin, Tom Buchner, Vince Romaniello, Bill Smith, and Ward Stevens



Copyright © 2019 by Echo Lake Steering Committee. All rights reserved.

www.echolakecollaborative.org

Introduction

The idea was simple: get a group of creative people together for three days of collaborating to make objects of art, have a banquet at the end, and auction off all the art work to fund future conferences. We never expected to make a profit, but each Echo Lake has routinely ended in the black. As a result, funds have been used to purchase machinery and tools for the woodworking and sculpture areas at Bucks County Community College, cash prizes have been awarded to deserving art students, and we've paid for this exhibition and catalogue.

It's hard to believe that we held our twentieth conference in 2018. Echo Lake started out as a local experiment reinterpreting the international Emma Lake Conference that began in Saskatchewan, Canada in 1996. It has become a much larger event that has included artists from all over the world while keeping to its local flavor and continues to include students, staff, and faculty from BCCC, where the event has taken place for most of those years. A dedicated organizing committee with an ability to select participants who work well in this sort of setting has made it a successful and much anticipated yearly experience for many. To date there have been over 250 different participants from 17 countries!

Having two or more artists conceptualize and create artwork in a short period of time is by no means a recipe for success, but often what materializes is the result of a kind of creative tangent that no one involved would have anticipated and that's what creates the excitement. Many participants leave Echo with an interest in trying something new or continuing to collaborate long after the conference concludes.

It is useful to know artists who have participated in the making of the objects in this exhibition as well as the stories of how the pieces evolved through the process of making them, and where this experience has altered the course of an artist's direction. But even if you are not aware of any of that, it is our hope that you enjoy an exhibition that is based on a very different approach to creativity and making.

Here is a list of active collaborative art conferences. It is truly a global phenomenon.

Emma Lake (Saskatchewan Canada)	Biennial 1996-present
CollaboratioNZ (Whangerau, NZ)	Biennial 1998-present
Echo Lake (Newtown, PA)	Annual 1999- present
Collaboration Australia	Biennial 2000-present
Hawkes Bay Turning Collab. (NZ)	2006-present
Collaboration Western Australia	2009-present
Hawaii Artist Collaborative (Big Island, HI)	Biennial 2011-present
French Collaboration	Biennial 2013-present
Frogwood (Portland, OR)	Annual 2013-present
Kollaboration, (Kamoursska Quebec, Canada)	Biennial 2017-present



Mark Sfirri

Echo Lake I - 1999



Urchin Lamp
Krick, W. Smith
From the Collection of
Joe Seltzer





Left: *Hardy's Castle*
Dodge, Hardy
From the Collection of
Lynn and Bill Smith



Right: *Brolly's Lamp*
M. Brolly, L. Brolly, Hardy, W. Smith,
Tuttle, Verchot, White
From the
Fleur Bresler Collection

Echo Lake II - 2000



Left: *Mobile*
Echo Lake II Participants
From the Collection of
Joe Seltzer



Right: *Small Carved Goblet*
Buchner, M. Kehs, Krick
From the Collection of
Joe Seltzer



Top: *Carved Piece with Spiral*
Neff, Wall
From the Collection of
William Sticker

Bottom: *Suspended Bowl*
Manix, Stang
From the
John and Patricia Williams' Collection

Echo Lake III - 2001



Bottles

Hosaluk, Scarpino, Sfirri

From the Collections of

Kim Kelzer,

Albert and Tina LeCoff,

David Souza,

and the

John and Patricia Williams'

Collection



Bowl with Milk Paint

Hardy, Lancaster,

Scarpino

From the Collection of

Mike Tanner



Above: *Hosaluk Style Table*
Buchner, Hardy, M. Hosaluk, Tanner,
White

From the Collection of
Greg and Regina Rhoa

Left: *Stool of Sausage and Cheese*
Delhoun, Dodge, Escoulen, Preston,
Sfirri

From the Collection of
Albert and Tina LeCoff

Echo Lake IV - 2002



Candlesticks
Hardy, Sfirri
From the Collection of
Greg and Regina Rhoa

Top: *Twisted Wire and Sphere*
M. Hosaluk, Mathews, Tanner,
White
From the Collection of
Eli Scarce



Bottom: *Round Table and Chairs*
Echo Lake IV Participants
From the Collection of
Albert and Tina LeCoff



Echo Lake V - 2003



Left and Detail: *Emerging Vessel*
Buchner, Seltzer
From the Collection of
William Sticker

Right: *Twisted Sphere Table*
Buchner, Mathews, W. Smith,
Tanner, Williams
From the Collection of
Tom and Diane Buchner





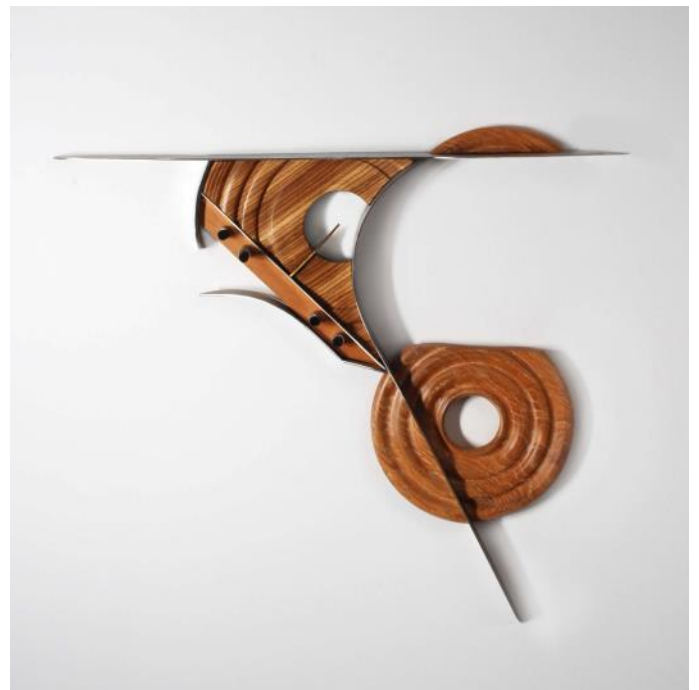
Bottom Left: *Hollow Form with Windows*
Gall, Krick
From the Collection of
William Sticker

Top Left: *Eli and Jean-Francois Box*
Avisera, Escoulen
From the Collection of
Joe Seltzer

Top Right: *Hanging Sphere*
M. Kehs, Sticker
From the
John and Patricia Williams Collection

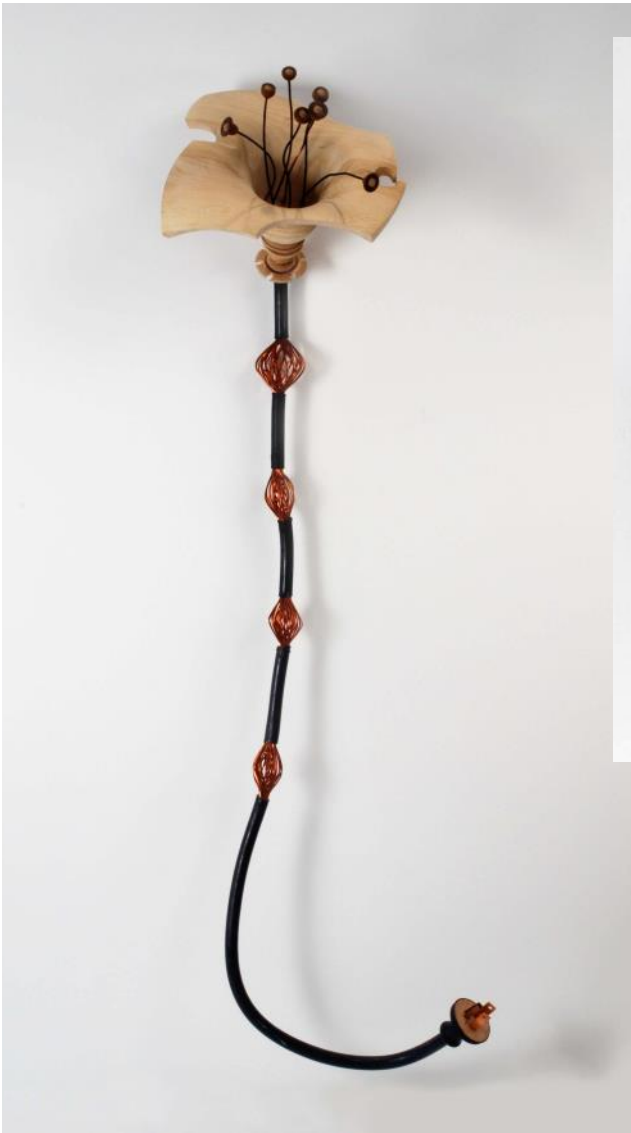
Bottom Right: *Can't Judge a Book by Its Cover*
Dodge, Escoulen, M. Kehs, Krick, Seltzer,
Sticker
From the Collection of
Albert and Tina LeCoff

Echo Lake VI - 2004



Left and Detail: *Table with Martini*
Forsyth, Hagen, Potocnik, M. Saylan, Sfirri
From the Collection of
Phyllis and Sidney Bresler

Bottom Left: *Wood and Metal Wall Piece*
Burns, Faunce, Mathews, Rodgers, W. Smith
From the Collection of John Mathews



Left: *Electrified Flower*
Burns, Geisenhoner, Mocho, Tatton
From the Collection of
Maureen McCreddie and Rich Clikeman

Right: *Castle on Burl Top*
Hardy, Neff, Seltzer, Sfirri,
W. Smith, Souza, Doug Weidman
From the Collection of
Jim Byrne and Judith Rodwin



Echo Lake VII - 2005



Left and Detail: *Fish Eating Fish*
Kagan, M. Kehs, E. Ryan, Sengel, W.
Smith, Sticker

From the Collection of
Jeremy and Shannon Sticker

Right: *Table with Wood Screw*
Byrne, Dubinsky, Mathews, Rodgers
From the Collection of
Albert and Tina LeCoff





Small Carved Goblet
M. Kehs, Derek Weidman
From the Collection of
Joe Seltzer

Echo Lake VIII - 2006



Top Left: *Wall Piece by 32 Artists*
Echo Lake VIII Participants
From the Collection of
Kenneth and Peggy Hume Hudson



Top Right: *Joe Seltzer Award*
Sfirri, Stevens
From the Collection of Joe Seltzer



Bottom Right: *Bil Sticker Award*
McCullough, Pho, Sfirri, Derek Weidman
From the Collection of William Sticker



Top Left: *Textured Box with Red Carved Finial*
Hohlfeld, Pho, Derek Weidman,
Williams
From the Collection of
Kim and Mike Kagan

Top Right: *White Box with Carved Finial*
Buchner, Byrne, Hohlfeld, Doug
Weidman, Yakonick
From the Collection of
Roberta Mayer and George Wagner

Bottom Left: *Gas Pump Instrument*
Faunce, Lott, Pfeifer, Sfirri
From the John and Patricia Williams'
Collection

Bottom Right: *Figure on Sphere*
Finkle, Hibbert, Sfirri
From the Collection of
John Mathews

Echo Lake IX - 2007



Left: *Derek's Carving of a Face*
Vesery, Derek Weidman
From the Collection of
Jim Byrne and Judith Rodwin

Right: *Bowl on Turned Sections*
Buchner, M. Kehs, McCullough,
Seltzer, Van Gehuchten
From the Collection of
Kim and Mike Kagan



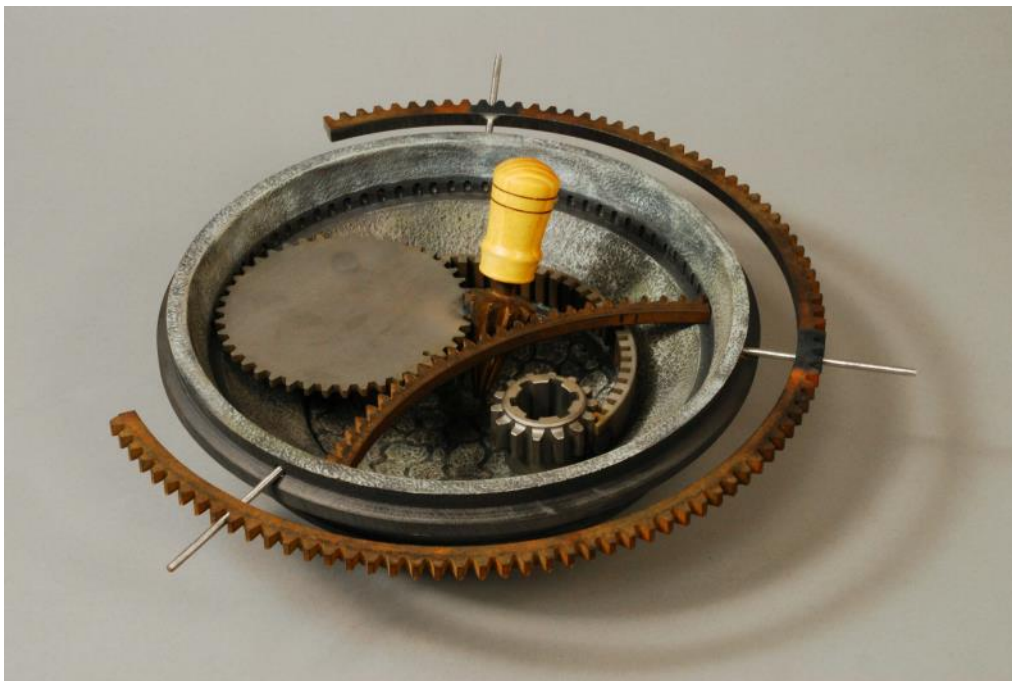


Table on Claw Feet
Burns, Faunce, Kagan, M. Kehs, W. Smith, Sticker
From the Collection of William Sticker

Echo Lake X - 2008

Right: *Tall Wood, Metal, and Glass Sculpture*
Publick, Rodgers, W. Smith,
Sticker, Van Gehuchten
From the Collection of
John Mathews

Bottom: *Gears*
Basil, Faunce, Kagan, Mathews,
Publick, Seltzer, W. Smith
From the Collection of
Albert an Tina LeCoff





Glass Table with Car Part
Manns, McDevitt
From the Collection of
Phyllis and Sidney Bresler

Echo Lake XI - 2009



Checkered Vessel
Basil, W. Smith
From the Collection of William Sticker



Top: *Kissing Spoons*
Mocho, Sartorius, Van Gehuchten
From the Collection of Joe Seltzer

Bottom: *Inferno*
Blanc, Hohlfeld, Mocho, Zander
From the Collection of John Mathews

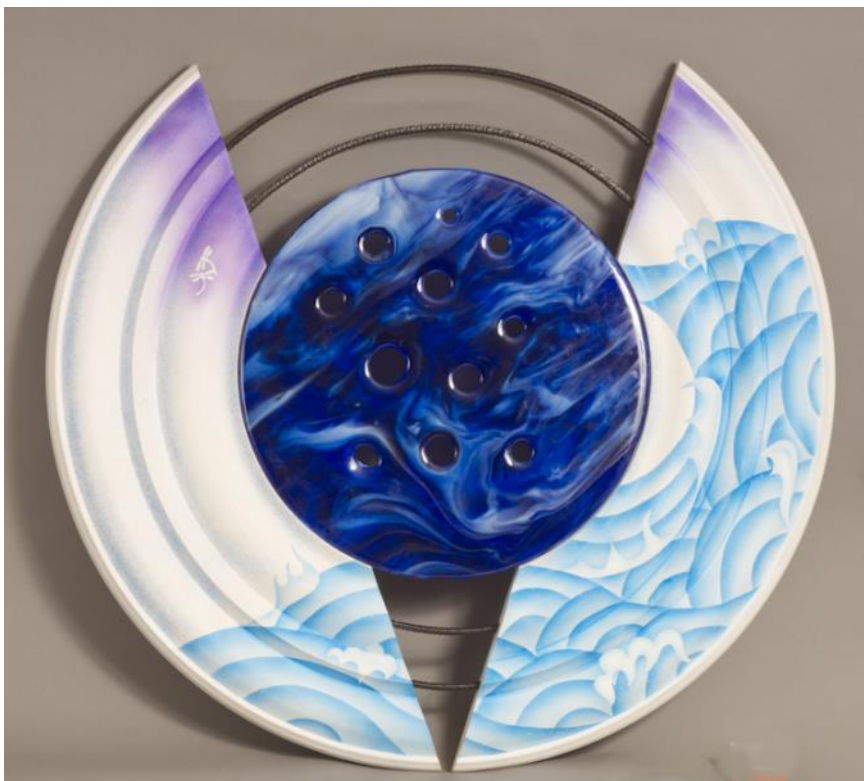
Echo Lake XII - 2010



Sunshine in the Garden

J. Hill, P. Hill, Pho

From the Collection of
Jeff Bernstein and Judy
Chernoff



Water

Chantry, Pho, Publick,
Rogahn, Sander, Thompson,
Zobel

From the Collection of
John Mathews



Cantilevered Triangle
Hauser, Tanner, Turi, Zobel
From the Collection of
Phyllis and Sidney Bresler

Echo Lake XIII - 2011

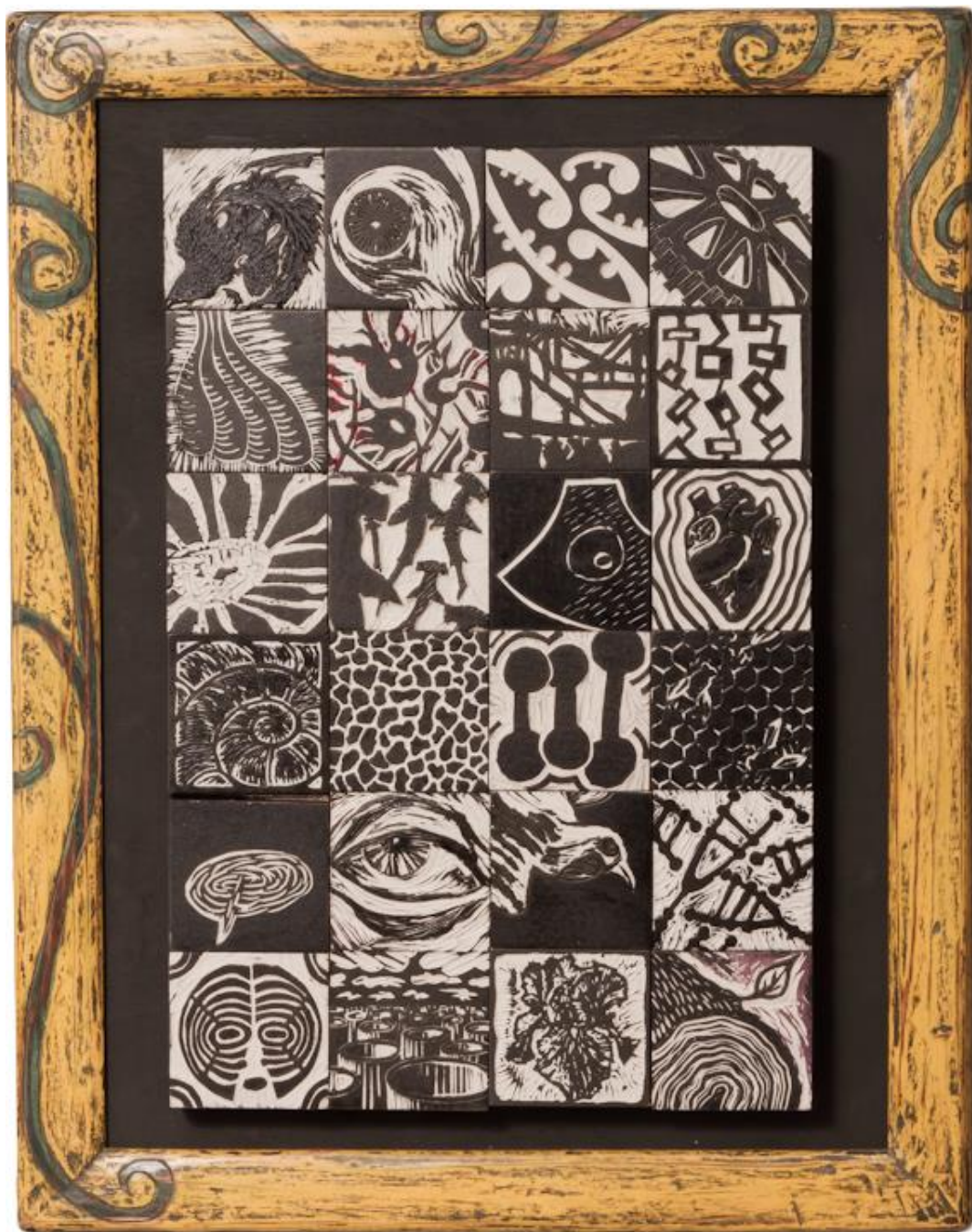


Left: *The Twinkle Table*
Ireland, Mocho, Van Gehuchten,
Winkle

From the Collection of
Jeremy and Shannon Sticker



Right: *New Zealand Sunrise*
Burns, Priddle, Rodgers, Rourke
From the Collection of
William Sticker



Mounted Lino-cut Blocks

Buchner, Carpenter, Davis, de Forest, Higgins, Holt, Kelle, Komenda,
McDevitt, Mocho, Priddle, Reichard, Scicchitani, Sfirri, J. Smith,
Stevens, Sticker, Turi, Van Gehuchten, Winkle, Woods, Zobel

From the Collection of Albert and Tina LeCoff

Echo XIV - 2012



Left: *From Deep In Echo Lake*
Hohlfeld, McCullough, Turi
From the Collection of
Bud Hohlfeld

Right: *Vitruvian Man 2012*
Buchner, Rogahn, W. Smith, Turi
From the Collection of
Jeremy and Shannon Sticker



Top: *Shield Of Life*
DiPietro, Ireland, Kelle
From the Collection of
Daniel and Stephanie Ostrov



Bottom: *24 Framed Lino-cut Blocks*
Annels, Buchner, Carpenter, Copeland,
Fein, Finkle, Furqueron, Hallett, Ire-
land, Lyon, Mathews, Mattia, Ostrov,
Rein, Rogahn, Scicchitani, Sfirri, J.
Smith, Sowden, Stevens, Sticker, Turi,
Woods, Zobel
From the Collection of
Albert and Tina LeCoff

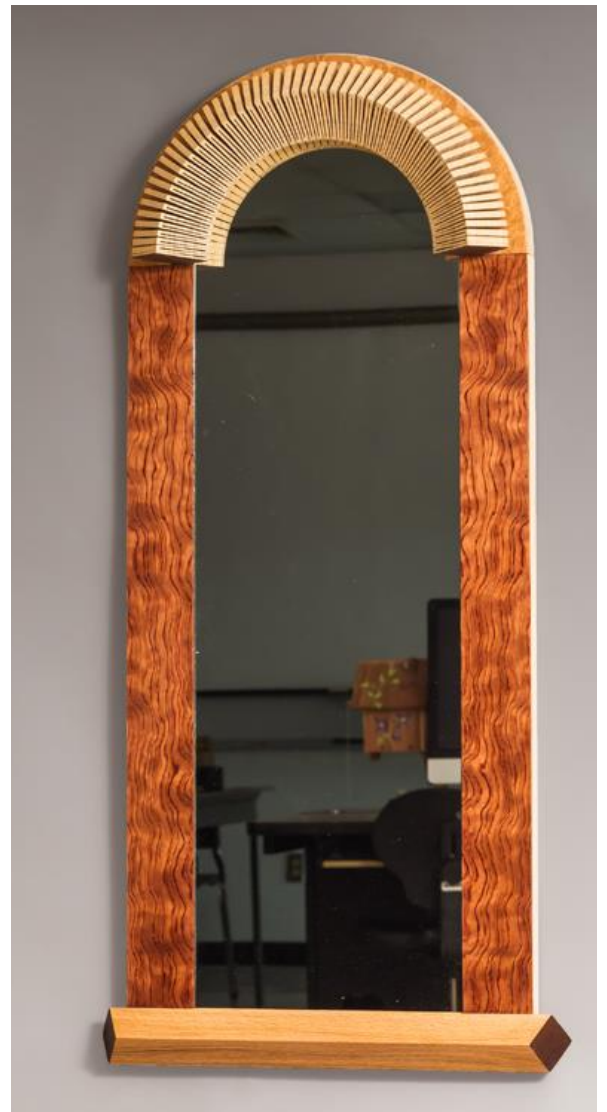


Echo Lake XV - 2013



Left: *Dragon*
Buchner, Carpenter, Geisenhoner,
Lyon, Derek Weidman, Zobel
From the Collection of
Deb Weidman-Phillips

Right: *Looking Good*
McNabb, Sticker, Van Gehuchten
From the
Fleur Bresler Collection





Top: *Digital Landscapes*
Burns, Ireland, McNabb,
Tanner
From the Collection of
Joe Seltzer

Bottom: *Cave Paintings*
Kehs, Sartorius, Sfirri
From the
Fleur Bresler Collection



Echo Lake XVI - 2014



24 Framed Blocks From Printing Project

Buchner, Chalik, Comisky, Copeland, Finkle, Gall, Gardner, Gehman, Greb, Hansuld, Ireland, Johnson, Kobayashi, Kridenoff, Mathews, Scarpino, Scicchitani, Sfirri, Shanblatt, Stevens, Sticker, Taylor, Turi, Winkle, Zobel

From the Collection of Albert and Tina LeCoff



Top: *Cyclops*
Chalik, Kridenoff, Mathews,
Rogahn, Turi, Zobel
From the Collection of
Jeremy and Shannon Sticker



Bottom: *Hosaluk - Nado*
M. Hosaluk, Priddle, J. Smith,
Sticker, Turi, Van Gehuchten,
Winkle
From the Collection of
Phyllis and Sidney Bresler

Echo Lake XVII - 2015



Sweet Dreams
Manesa-Burloiu, Sartorius
From the
Fleur Bresler Collection



Santa Fe
Chalik, Overton
From the Collection of
Maureen Gerber



Top: *A Song from the Wild*
Burns, Chalik, Harrison, Kalehoff, Mathews,
McCullough

From the Collection of John Mathews

Bottom: *The Insect Collection*

Buchner, Doughtie, M. Kehs, Kramer, Mathews,
McDevitt, Pastelaniec, Publick, Rogahn, Seltzer,
Sherry, Derek Weidman

From the Collection of Ed Bresler



Echo Lake XVIII - 2016



Left: *Ripped*
DiPietro, McDevitt, Richardson, Zobel
From the Collection of Burns and Renata Austin



Above and Detail: *And It's Sturdy, Too*
Burns, Faunce, Kelle, Publick, Seltzer,
Tanner

From the Collection of
Jeremy and Shannon Sticker



Under Echo Lake

Burns, Hall, McDevitt, G. Priddle, Publick,
Richardson, Derek Weidman, Zobel
From the Collection of Deb Weidman-Phillips



Voices of Echo

Austin, Buchner, Burns,
Carpenter, Chelf,
Copeland, Engler, Eriks-
moen, Faunce, Flaherty,
Gall, Geisenhoner, Gibson,
Hall, Holt, Hohlfeld,
Infante, Ireland, Kahn,
Kehs, Kelle, Lutz,
McCullough, Mathews,
Overton, G. Priddle,
Publick, Richardson, Ed
Ryan, Pat Ryan, Scarpino,
Seltzer, J. Smith,
Stevens, Sticker, Tanner,
Turi, Van Gehuchten,
Veith, Wangphongsawasd,
Winkle, Zobel



From the Collection of
Alice and Dan Comisky

Echo Lake XIX - 2017



Top: *Iron Stampede*
Agar, McDevitt, Derek Weidman
From the Collection John Mathews

Bottom: *Foggy Mountain Nervous
Breakdown II*
Henderson, Ireland, McDevitt,
Wilbur, Winkle
From the Collection of
Suzanne Bonsall Kahn



Top Right: *Separation Anxiety*
Burns, Carpenter, Cortez, Engler,
Lutz, Mathews, M. Veith
From the Collection of
Phyllis and Sidney Bresler



Bottom: *Ball Joint*
Agar, Brosi, Kagan, G. Priddle
From the Collection of
Joe Seltzer



Echo Lake XX - 2018



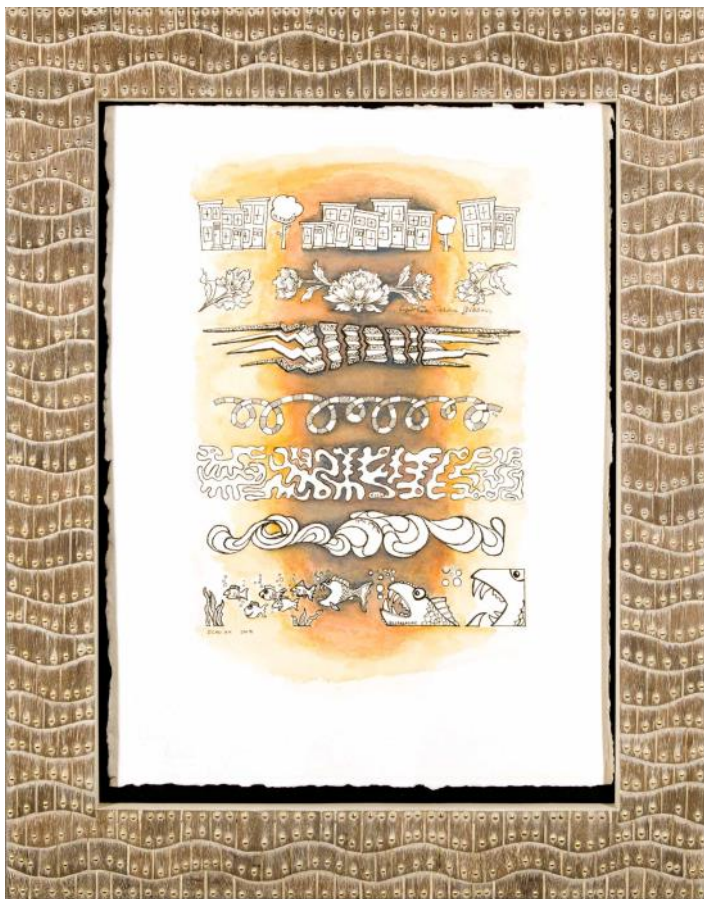
Harmony
Carpenter, Engler, Gibson,
Hall, M. Kehs, Mocho, G.
Priddle, Seltzer, M. Veith,
Doug Weidman, Williams,
Zobel
From the Collection of
Bud Hohlfeld



Graeme's Boat People
Carpenter, Castaldo, Chalik,
Engler, Garcia, L. Hosaluk, M.
Hosaluk, G. Priddle, Sfirri
From the
Fleur Bresler Collection



Top and Detail: *In Bloom*
Burns, Gibson, Hall, Tanner, Zobel
From the Collection of Dan Zobel



Bottom: *Orange*
Engler, Flaherty, Garcia, Gibson, M.
Hosaluk, Kehs, G. Priddle, Serratore,
Sfirri, Stevens
From the Collection of Jeremy and
Shannon Sticker

The Echo Lake Artists

Artists participating in one or more conferences 1999–2018.

Nick Agar
Eric Adjetey Ananag
Maria Anasazi
Ross Annels
Jake Antonnelli
Burns Austin
Eli Avisera
Russell Baldon
Danielle Barbour
Hannah Bardin
Peter Basil
Tara Bellofatto
David Bender
Devon Bird
Jerome Blanc
Kim Blatt
Michael Brolly
Lynne Eshelman Brolly
Max Brosi
Katie Brown
Tom Buchner
Ryan Burkholder
Jon Burns
Peter Buruschkin
Jim Byrne
Marilyn Campbell
Miriam Carpenter ITE
Dennis Carr
Rachel Castaldo
Rachel Chalik
Chris Chantry
Dinyar Chavda
Jeff Chelf
Hunt Clark
Dan Cominsky
Ryan Conley
Darrell Copeland
Gabe Cortez
Robert Crowe
Mason Darrow
Michael Davis
Christian Delhon
Michael de Forest

Luc DeRoo
Jim Dipaolo
Andy DiPietro
Robert Dodge
Sharon Doughtie
George Dubinsky
Michelle Eckert
Melissa Engler
Ashley Eriksmoen
Jean-Francois Escoulen
Monique Escoulen
Peter Exton
Ray Faunce
Andrew Fecik
Harvey Fein
Christine Figueroa
Noel Figueroa
Doug Finkel
Daniel Fishkin ITE
Nicholas Flaherty
Cassie Flor
Amy Forsyth
Felicia Francine
Linton Frank
Amanda Fries
Tina Fruchter
Satoshi Fujinuma
Reagan Furqueron
Irene Gafert
Tom Gall
Tom Ganos
Fabiane Garcia
Mark Gardner
Jennifer Rubin Garey
Jordan Gehman
Hank Geisenhoner
Cynthia Gibson
Stephen Goetschius
Beth Gordon
Margo Greb
Laurent Guillot
Susan Hagan
Carol Hall

John Hallet
Reed Hansuld
Matthew Harding
Dave Hardy
Julia Harrison
Phil Hauser
Winifred Helton-Harmon
Alex Henderson
Jay Heryet
Louise Hibbert
Tara Higgins
John Hill
Patti Hill
Daniel Hoffman
Donna Franchi Hofstaedter
Bud Hohlfeld
Keith Holt
Laura Hosaluk
Michael Hosaluk
Katie Hudnall
Peggy Hudson
Gabe Infante
Beth Ireland
Amber Johnson
Mike Kagan
Suzanne Kahn
Sean Kain
Rex Kalehoff
Michael Kehs
Rick Kehs
Ed Kelle
John Kelsey
Yuri Kobayashi
Kelly Komenda
Pat Kramer
Mark Krick
Sarah Kridenoff
Friedrich Kuhn
Mike Kuterbach
Dave Lancaster
Jack Larimore
Ed Lashen
Anastasia Leto

The Echo Lake Artists

Artists participating in one or more conferences 1999-2018.

Steve Loar
Sal LoSapio
Ted Lott
Vince Luppino
John Lutz
Robert Lyon
Rob Malinowski
Blake Malovetz
Zina Manesa-Burloiu
Sean Mannix
Ben Manns
Rudiger Marquarding
Terry Martin
John Mathews
Alphonse Mattia
Deborah McClary
Joyce McCullough
John McDevitt
James McNabb
Courtney McPeak
Linette Messina ITE
Nic Messina
Addie Metivier
Don Miller
Michael Mocho
Jim Neff
Jack Nichols
Peter Oliver
Daniel Ostrov
Katie Ott
Matt Overton
Won Joo Park
Cristina Pastelaniec
Hilary Pfeifer
Binh Pho
Carl Pittman
Martina Plag
Natalie Poserina
Andrew Potocnik
Richard Preston
Adrian Priddle
Graeme Priddle
John Q. Publick

Debbie Reichard
Jeanette Rein
Bryan Richardson
Maggy Robinson
David Rogers
John Rodgers
Chris Rogahn
Vincent Romaniello
Nancy Rourke
Ed Ryan
Pat Ryan
Steve Sander
Poppy Sangthong
Norm Sartorius
Bill Sarver
Ed Saylan
Merryll Saylan
Betty Scarpino
Eli Searce
Bo Schmidt
Jason Schneider
Ed Schwalm
Sandra Scicchitani
Neil Scobie
Adrien Segal
Joe Seltzer
David Sengel
Barb Serratore
Mark Sfirri
Michael Shanblatt
Jack Shelly
Ellen Sherry
Joanne Shima
David Short
Brian Skalaski
Bill Smith
Janice Smith
Matt Smolens
Joe Smoyer
Chris Snyder
Phil Snyder
Sarah Spratlin
Cheryl Spears

Dave Souza
Jane Sowden
Ric Stang
Ward Stevens
Bil Sticker
Jo Stone
Michaela Crie Stone
Jane Swanson
Mike Tanner
Marcus Tatton
Hannah Taylor
Don Thompson
Matthew Timek
Chris Todd
Jeff Turi
Dick Tuttle
Linda Van Gehuchten
Grant Vaughan
Dick Veitch
Michael Veith
Remi Verchot
Jacques Vesery
Dave Wahl
Marjin Wall
Phil Wall
Ann Walsh
Nucharin Wangphongsawasd
Gordon Ward
Derek Weidman
Doug Weidman
Ryta Weiner
Norris White
Greg Wilbur
John Williams
Kimberly Winkle
Leah Woods
Anthony Yakonick
Malcolm Zander
Dan Zobel





Acknowledgements

Echo Lake Collaborative is still an annual event after twenty years because of the vision, hard work, and perseverance of its founding members: Bil Sticker, Mark Sfirri and Dave Hardy. Dave Hardy came up with the idea and held it at his house in Hilltown, Pennsylvania for the first several years before it moved to Bucks County Community College in Newtown, Pennsylvania. Mark Sfirri drew in artists with his connections in the arts, housed and fed visitors, thereby establishing a foundation of community and creativity. Bil Sticker, a long time supporter of wood art in the Philadelphia area, supplied his organizational and financial skills to the endeavor every year since its inception. He also enlisted his family. Bil's wife, Kathleen, whom we so fondly remember, pitched in to help with the banquet and auction, while his son, Jeremy Sticker, along with his wife Shannon and daughter Amber, have been the administrative and packaging works behind the auction every year. Jeremy has contributed his professional skills and equipment, to keep the auctions running smoothly since the beginning.

For the bulk of the 20 years of operation, the steering committee consisted of Bil Sticker, Mark Sfirri, John Mathews, Bill Smith, Joe Seltzer. In 2015 Ward Stevens took over the catalog and media duties Bill Smith pioneered, and more recently Matt Overton, Barb Serratore and Tom Buchner joined the committee. The countless hours of collaboration of this group to plan, organize, communicate and procure has led to a conference event of focus, fun, and creativity each year.

The Collaboration is indebted to Bucks County Community College, its faculty, staff and selected students for hosting and participating in the event. Over these years there have been more than 250 participants, including many members of The Bucks Woodturners, our local American Association of Woodturners group and 70 visiting members of the International Turners Exchange.

The Committee also wishes to thank New Hope Arts for hosting our celebration and helping with its planning and orchestration. Carol Cruickshanks has been invaluable in guiding us through the process, and making sure everything came together at the Center. She and her staff have been most helpful in putting together the exhibition.

The Steering Committee

Tom Buchner, John Mathews, Mark Overton, Joe Seltzer, Barb Serratore, Mark Sfirri, Ward Stevens, and Bil Sticker

